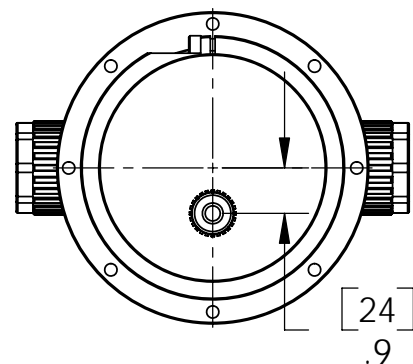


- NOTES:
1. UNIT IS SUITABLE FOR USE IN UPRIGHT OR INVERTED ORIENTATION.
 2. DIMENSIONS SHOWN ARE VALID FOR ALL FITTING CONFIGURATIONS.
 3. CONSULT THE FACTORY FOR AVAILABLE FITTING SIZES AND STYLES.



APPROVED BY:			PRODUCTION REVIEW:			Q.C. REVIEW:			<div><div><div>PROCESS TECHNOLOGY®</div><div>7010 LINDSAY DR, MENTOR OH USA (P) 440-946-9500 (F) 440-974-9561 WWW.PROCESS-TECHNOLOGY.COM</div></div><div><div><div>← [mm] →</div><div>INCHES</div></div><div>INTERPRET GEOMETRIC DIMENSIONING AND TOLERANCING PER ASME Y14.5M</div><div><div><div><div><div></div><div></div><div></div></div><div></div></div><div>3rd ANGLE PROJECTION</div></div></div></div></div>				
						PCN:							
						MATERIAL:							
0	DJO	1/27/06	CONVERTED 12-0352-1 TO NEW CATEGORY						DRAWN BY: NAL		DATE: 12/22/05	DESIGNER: NAL	DATE: 12/22/05
REV.	BY	DATE	DESCRIPTION OF CHANGE						DESCRIPTION: SALES DRAWING: 70mm LTFH				
THIS DRAWING IS THE PROPERTY OF PROCESS TECHNOLOGY. IT CONTAINS CONFIDENTIAL INFORMATION AND MAY NOT BE REPRODUCED IN ANY WAY WITHOUT THE PERMISSION OF PROCESS TECHNOLOGY									SIZE: B SCALE: 1:4 PAGE: 1 OF 1 DRAWING No. 53-0001-0				